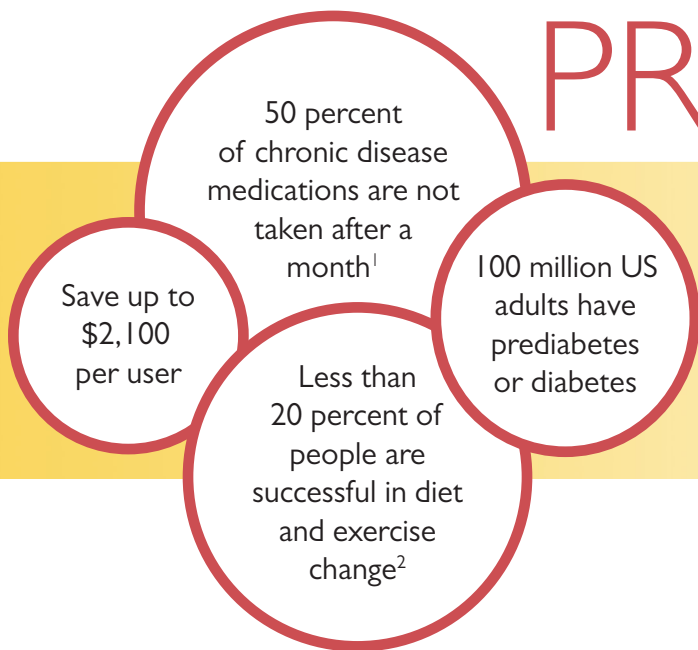


# DIABETES PROGRAM



Diabetes supplies are now offered as part of the HealthEZ Diabetes program. The following diabetes supplies will be provided to covered employees and dependents at no cost:

- Glucose meter
- Testing strips
- Control solution
- Lancets
- Lancing devices

The employer will pay \$1250 for each participating employee, annually.

Members will be paired with a health coach that will guide members to better management.

Our approach helps members become self-sufficient through practice under the guidance of an expert. We focus on goals that are important to the members who are ready for a change. They receive feedback that guides their mastery over a given task until eventually, they're ready to make important lifestyle decisions.

If you are interested in offering the diabetes supply program, please reach out to the LivEZ team:  
**1-800-948-8824**



<sup>1</sup> Sabate, E. (2012). Adherence to long-term therapies: evidence for action. Geneva: World Health Organization; 2003.

<sup>2</sup> Mellen, P. B., Gao, S. K., Vitolins, M. Z., & Goff, D. C. (2008). Deteriorating dietary habits among adults with hypertension: DASH dietary adherence, NHANES 1988-1994 and 1999-2004. Archives of internal medicine, 168(3), 308-314.